

WELLS DRAW RIDE - APRIL 16, 2011

Well's Draw is about 40 miles west of Vernal, on Hwy 40 and then turn south on the nine-mile road, just past Myton. You will have to drive on about 20+ miles of dirt road.

We start our ride just across the road from an old stage stop. The old bricks (rocks) are still visible. Pretty unique part of history! The group heads southwest up the hill and then travel cross-country (southwest) for about 4 to 5 miles; up and down the draws and across the tops. It is a great ride. Lunch is at an old outlaw hideout. The old tree corrals can be seen. Returning to the starting point was cross-country for some and others chose to follow a two-track. The return ride takes about 2 hours.

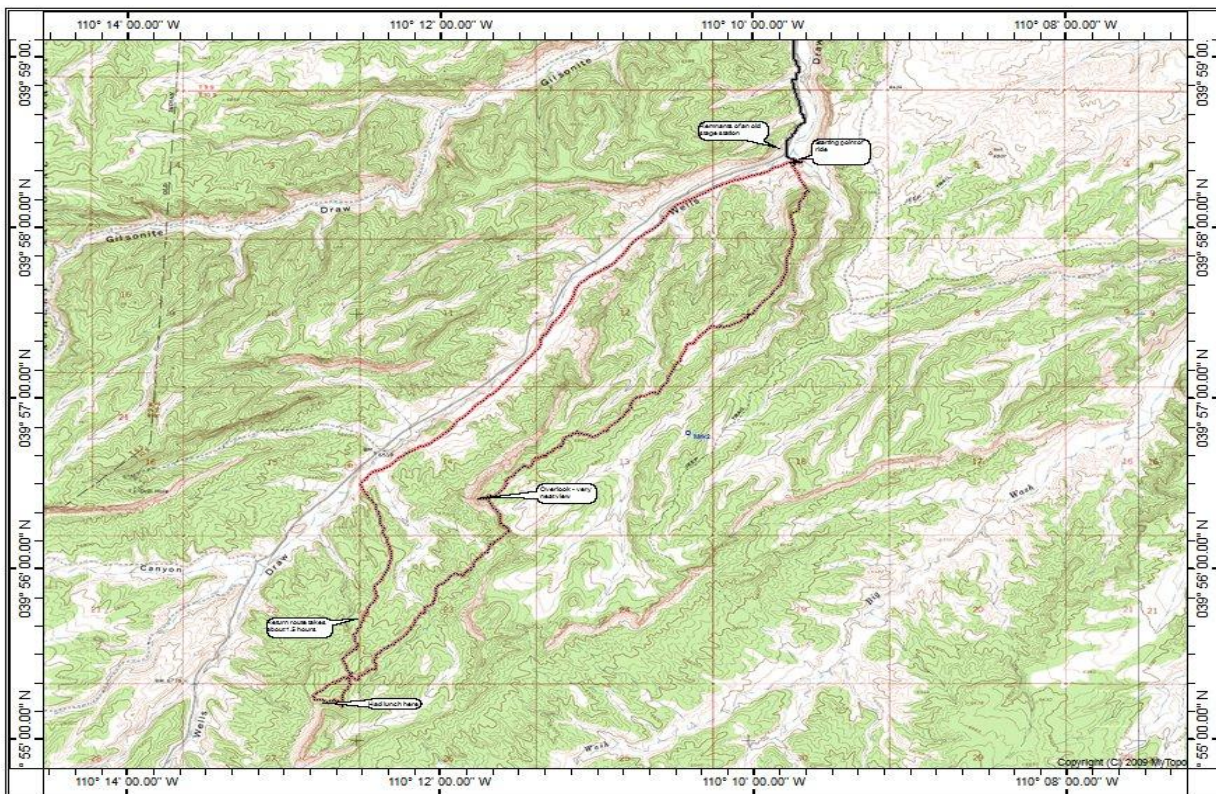


The snow-capped Uintah Mountains are seen in the background

Lunch Time



Map of Well's Draw Trail Ride



Photos and narrative by Linda Wilson